

MICRO COMPONENT SYSTEM

UX-LP5

Consists of CA-UXLP5 and SP-UXLP5

For turning off the demonstration display, see "Display Demonstration" on page 3.



Thank you for purchasing a JVC product.

INSTRUCTIONS

LVT1986-019A(J)/C

0109KMMMDWCOT

For customer use: Enter below the Model No. and Serial No. which are located either on the rear, bottom or side of the cabinet.

For U.S.A.: This equipment has been tested and found to comply with the limits for a Class B digital device, pursuant to part 15 of the FCC Rules.

These limits are designed to provide reasonable protection against harmful interference in a residential installation. This equipment generates, uses and can radiate radio frequency energy and, if not installed and used in accordance with the instructions, may cause harmful interference to radio communications.

Warnings, Cautions and Others



CAUTION: TO REDUCE THE RISK OF ELECTRIC SHOCK, DO NOT REMOVE COVER (OR BACK). NO USER SERVICEABLE PARTS INSIDE.



Le symbole de l'éclair à l'intérieur d'un triangle équilatéral est destiné à alerter l'utilisateur sur la présence d'une "tension dangereuse" non isolée dans le boîtier du produit.

CAUTION: Changes or modifications not approved by JVC could void the user's authority to operate the equipment.

WARNING: TO REDUCE THE RISK OF FIRE OR ELECTRIC SHOCK, DO NOT EXPOSE THIS APPLIANCE TO RAIN OR MOISTURE.

CAUTION: To reduce the risk of electrical shocks, fire, etc.: 1. Do not remove screws, covers or cabinet.

ATTENTION: Afin d'éviter tout risque d'électrocution, d'incendie, etc.: 1. Ne pas enlever les vis ni les panneaux et ne pas ouvrir le coffret de l'appareil.

IMPORTANT FOR LASER PRODUCTS

- 1. CLASS 1 LASER PRODUCT
2. CAUTION: Do not open the top cover or cabinet. There are no user serviceable parts inside the unit; leave all servicing to qualified service personnel.
3. CAUTION: Visible and/or invisible class 1M laser radiation when open. Do not view directly with optical instruments.
4. REPRODUCTION OF LABEL: CAUTION LABEL, PLACED INSIDE THE UNIT.

IMPORTANT POUR PRODUITS LASER

- 1. PRODUIT LASER CLASSE 1
2. ATTENTION: N'ouvrez pas le couvercle supérieur ni le coffret de l'appareil. Il n'y a aucune pièce réparable par l'utilisateur à l'intérieur de l'appareil; confiez toute réparation à un personnel qualifié.
3. ATTENTION: Rayonnement laser visible et/ou invisible de classe 1M une fois ouvert. Ne pas regarder directement dans le faisceau avec des instruments optiques.
4. REPRODUCTION DE L'ÉTIQUETTE: ÉTIQUETTE DE PRÉCAUTION PLACÉE À L'INTÉRIEUR DE L'APPAREIL.



CAUTION: The O/I button in any position does not disconnect the mains line. Disconnect the mains plug to shut the power off completely (the STANDBY lamp goes off).

ATTENTION: La touche O/I, quelle que soit sa position, ne coupe pas la ligne principale. Débrancher la fiche principale pour couper complètement l'alimentation du secteur (le témoin STANDBY s'éteint).

CAUTION: Excessive sound pressure from earphones or headphones can cause hearing loss.

ATTENTION: Une pression acoustique excessive des écouteurs ou du casque d'écoute peut entraîner une perte auditive.

CAUTION: Battery shall not be exposed to excessive heat such as sunshine, fire, or the like.

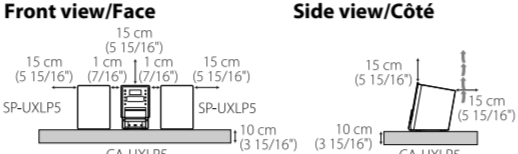
ATTENTION: Les piles ne doivent en aucun cas être exposées à une chaleur excessive (lumière du soleil, feu, etc.).

CAUTION: Proper Ventilation

- To avoid risk of electric shock and fire, and to prevent damage, locate the apparatus as follows:
1. Front: No obstructions and open spacing.
2. Sides/Top/Back: No obstructions should be placed in the areas shown by the dimensions below.
3. Bottom: Place on the level surface. Maintain an adequate air path for ventilation by placing on a stand with a height of 10 cm or more.

ATTENTION: Aération correcte

- Pour prévenir tout risque de décharge électrique ou d'incendie et éviter toute détérioration, installez l'appareil de la manière suivante:
1. Avant: Bien dégagé de tout objet.
2. Côtés/dessus/dessous: Assurez-vous que rien ne bloque les espaces indiqués sur le schéma ci-dessous.
3. Dessous: Posez l'appareil sur une surface plane et horizontale. Veillez à ce que sa ventilation correcte puisse se faire en le plaçant sur un support d'au moins dix centimètres de hauteur.

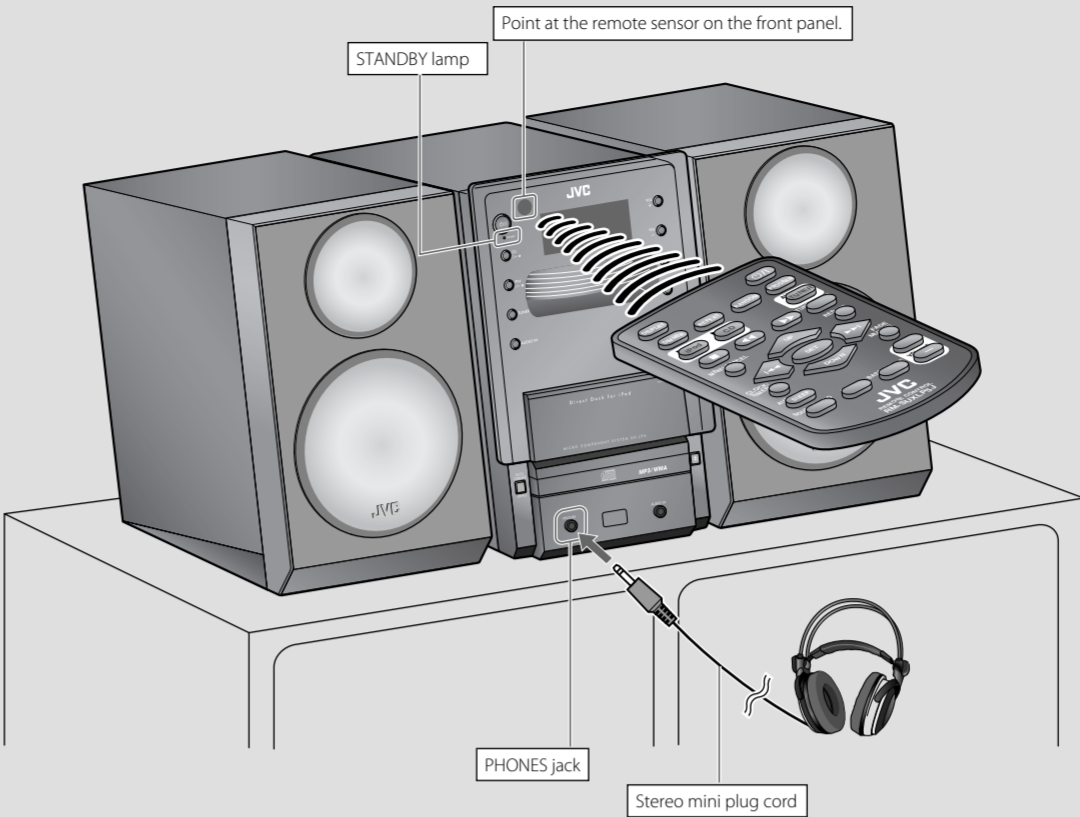


CAUTION: Do not block the ventilation openings or holes. (If the ventilation openings or holes are blocked by a newspaper or cloth, etc., the heat may not be able to get out.)

ATTENTION: Ne bloquez pas les orifices ou les trous de ventilation. (Si les orifices ou les trous de ventilation sont bloqués par un journal un tissu, etc., la chaleur peut ne pas être évacuée correctement de l'appareil.)

(European Union only) (Union européenne seulement)

Basic and Common Operations



Display Demonstration: When you plug in the System, the display demonstration automatically starts. To cancel the display demonstration, press and hold DEMO until "DEMO CLR" is displayed while the System is on standby.

Using Headphones: Be sure to turn down the volume before connecting or putting on the headphones. Connecting the headphones will deactivate the speakers.

NOTE: DO NOT turn off (standby) the System with the volume set to an extremely high level; otherwise, the sudden blast of sound can damage your hearing, speakers and headphones when you turn on the System or start playback.

The operations on pages 4 to 6 are explained using the remote control, unless mentioned otherwise. However, if the System has the same or similar button names, they can also be used for the operations.

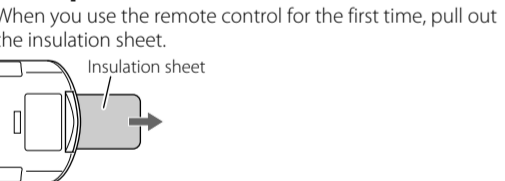
Table with columns: To, Press (System, Remote), Indication/Result. Rows include: Turn on/off power, Select a source, Adjust volume, Drop volume, Emphasize sound, Reinforce bass, Adjust tone, Dim display, Set clock/timer, Change display info, Set ECO Mode.

Getting Started

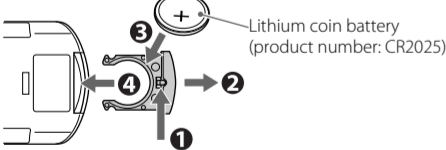
Supplied Accessories

- Remote control, RM-UXLP5J (x 1)
Lithium coin battery CR2025 (x 1)
AM loop antenna (x 1)
FM antenna (x 1)
Protection sheet (x 1)

Prepare the Remote Control



To Replace the Battery in the Remote Control



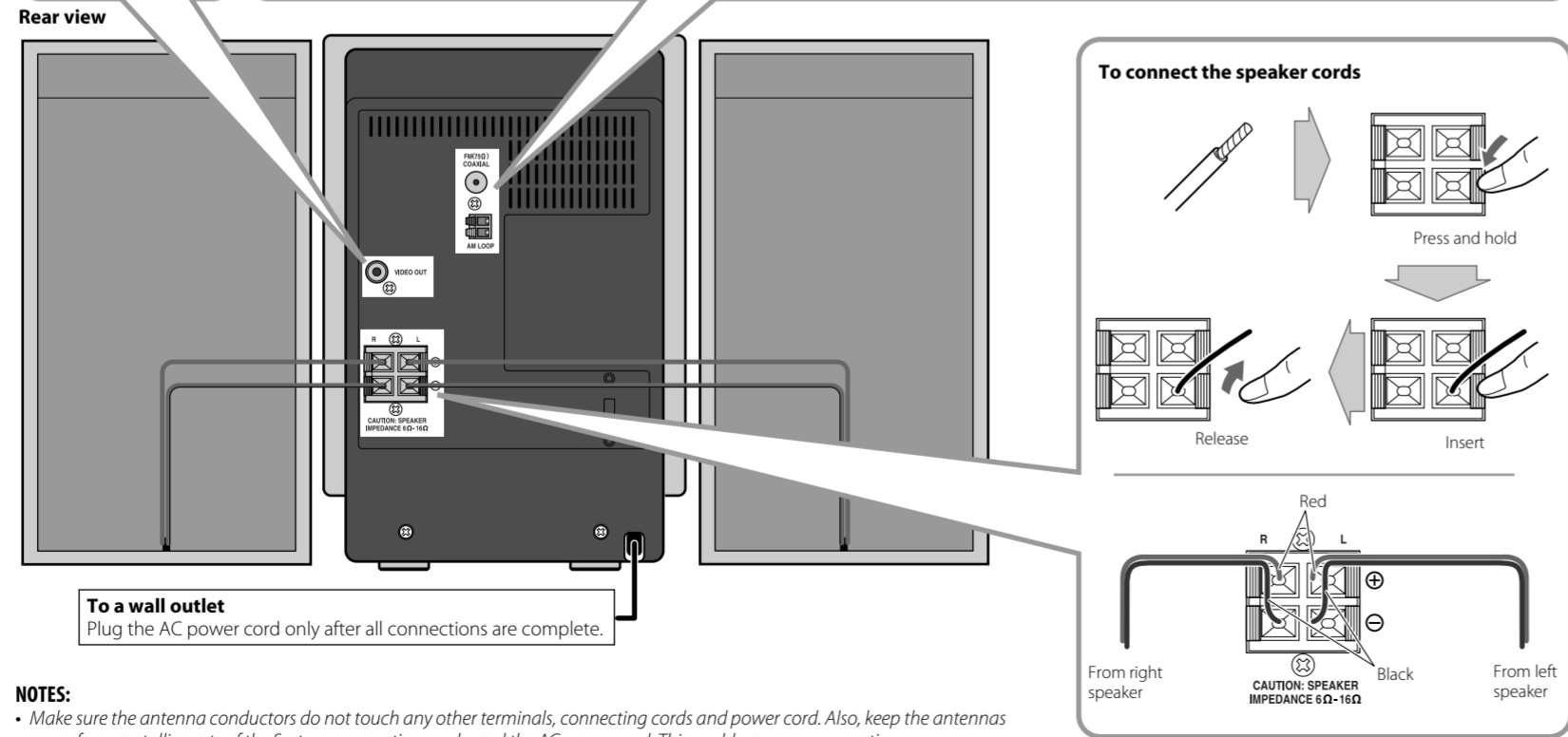
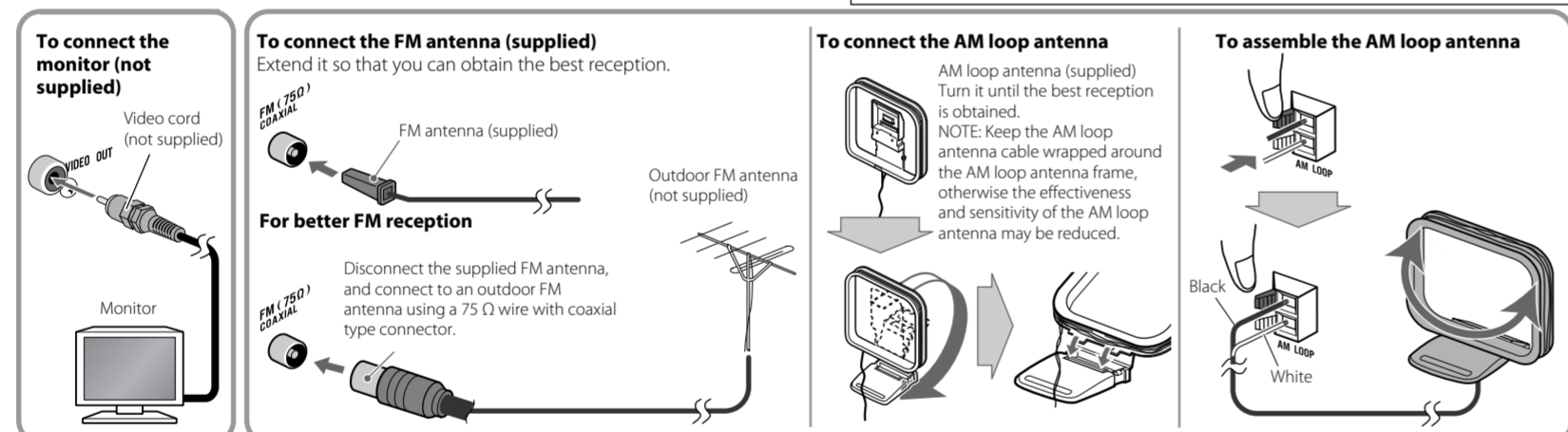
- NOTES:
Store the battery in a place where children cannot reach.
Prevent the battery from overheating, cracking, or starting a fire.
Do not recharge, short, disassemble or heat the battery or dispose of it in a fire.
Do not leave the battery with other metallic materials.
Wrap the battery with tape and insulate when throwing away or saving it.
Do not poke the battery with tweezers or similar tools.
Dispose of battery in the proper manner, according to federal, state, and local regulations.

For USA-California Only: This product contains a CR Coin Cell Lithium Battery which contains Perchlorate Material - special handling may apply.

CAUTION: Danger of explosion if battery is incorrectly replaced. Replace only with the same or equivalent type.

Connections

Do not connect the AC power cord until all other connections have been made.

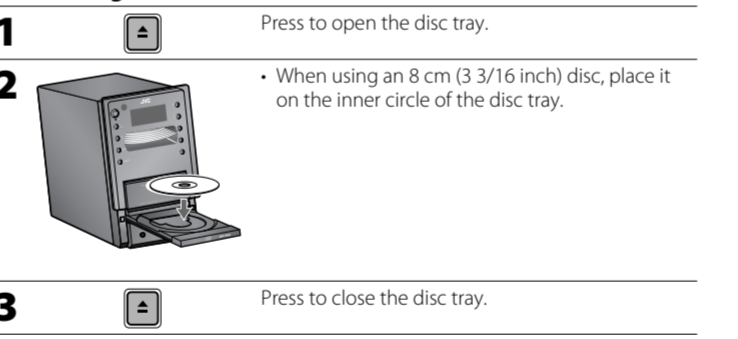


- NOTES:
Make sure the antenna conductors do not touch any other terminals, connecting cords and power cord.
Make sure both the speakers are connected correctly and firmly.
When connecting the speaker cords, match the polarity of the speaker terminals: red color to (+) and black color to (-).
DO NOT connect more than one speaker to each terminal.
DO NOT allow the conductor of the speaker cords to be in touch with the metallic parts of the System.

Playing Back a Disc

This System can play back... CD, CD-R/CD-RW recorded in audio CD format (CD-DA) or recorded MP3/WMA files in ISO 9660 format.

Loading a Disc (on the System only)



Prohibiting Disc Ejection (on the System only)

You can lock the disc tray so that no one can eject the loaded disc while the System is on standby. Press these buttons for 2 seconds while the System is on standby. To cancel the prohibition, repeat the same procedure.

Basic Disc Operations

Table with columns: To, Press, Indication/Result. Rows include: Play back the disc, Stop playback, Select a track, Select a group, Forward/Reverse search, Change display info.

NOTES:
If no disc is inserted, "NO DISC" appears on the main display.
If MP3/WMA files are not recorded on the disc, "NO PLAY" appears on the main display.

RESUME Play

Press RESUME to activate RESUME Play so that the RESUME indicator lights up. When you stop the playback by one of the following operations, this System stores the beginning of the stopped track on the disc.

Playing Repeatedly—Repeat Play

- 1. Press repeatedly to specify the repeat mode as follows:
Repeat (RPT): Repeats the current (or specified) track.
Repeat All (ALL): Repeats all tracks in the current group (MP3/WMA only).
Repeat All (ALL): Repeats all tracks.
No indicator (Off): Normal playback

Programming the Playing Order—Program Play

- 1. During stops, press so that the PRGM (program) indicator lights up.
2. Select a track number.
3. Press to program the selected track.
4. Repeat steps 2 and 3 to program other tracks you want.
5. The tracks are played back in the programmed order.

Operations for Program Play (while program stop mode)

- To check the programmed contents, press SET repeatedly.
To add tracks, after " -- " appears on the display by pressing SET repeatedly, repeat steps 2 and 3 above.
To erase or exit the program, press . The stored program is not kept.

Playing at Random—Random Play

- 1. Press so that the RND (random) indicator lights up and playback starts in random order.
Operations for Random Play:
To skip a track, press .
To go back to the beginning of the current track, press .
To exit from random play, press RANDOM so that the RND (random) indicator disappears during playback.

